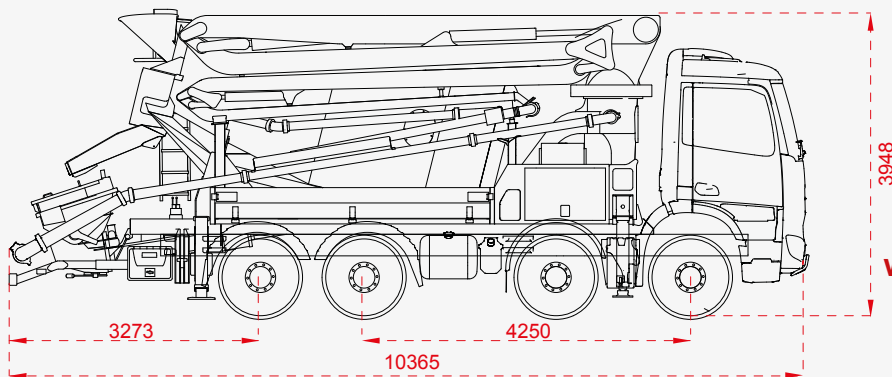


PUMP MIXERS

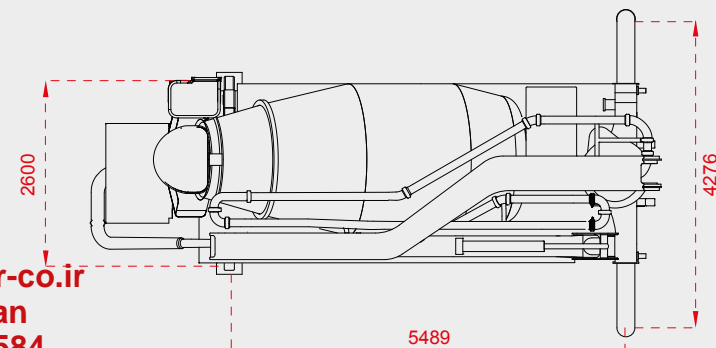
# ALLSTAR 26



## ● TECHNICAL DETAILS



## ● SUPPORT LEGS DIMENSIONS



[www.saghargostar-co.ir](http://www.saghargostar-co.ir)  
@mr.pump\_iran  
+98 0912 8 584 584  
+98 021 - 224 286 75/8

## ● PUMP GROUP

	Standard <b>ALLSTAR H 26.70-4Z</b>
Theo. Concrete Output (max) (Rod Side)	70 m <sup>3</sup> / h
Theo. Concrete Pressure (max) (Rod Side)	81 bar
Stroke	30 stroke / min
Concrete Cylinder Dimensions	200 mm x 1250 mm
Main Hydraulic Pump	A4 VG 180 (REXROTH)

## ● PUMP SPECIFICATIONS

Hopper Capacity	: 650 liter
Switching System	: Elect. Magn. Sensor
Concrete Valve	: S Valve System
Boom Pump	: A17F045 (REXROTH)
Agitator Pump	: Included (ASC)
Mixer Pump	: A4 VG 90 (REXROTH)

## ● STANDARD EQUIPMENTS

Smartstar Control System	: Included
Electric Box	: Water Proof and Computer Control
Proportional Remote Controller	: Included (HETRONIC)
End Hose	: 3 m
Water Pump	: Included, 4 m <sup>3</sup> /h
Water Tank Capacity (Material: Composite)	: 500 liter, 15 m hose with fittings
Lubrication System	: Hydraulic (LINCOLN and ALLFETT)

## ● MIXER SYSTEM

Nominal Capacity	: 7 m <sup>3</sup>
Drum Speed	: 1-14 rpm
Filling Rotio	: %60

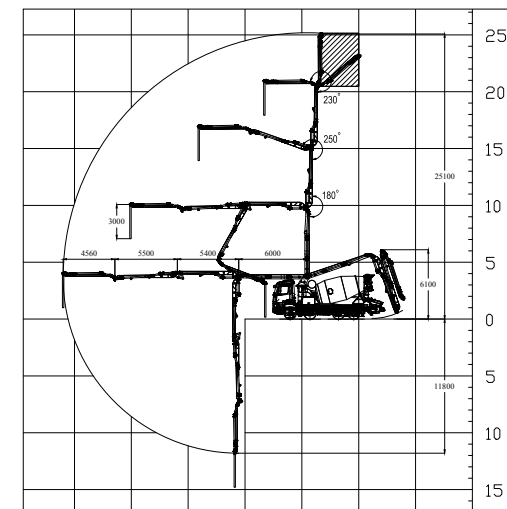
## ● BOOM SYSTEM

Boom Type	: 4Z
Vertical Reach (max)	: 25,6 m
Horizontal Reach (max)	: 21,4 m
Boom Unfolding Height (min)	: 6,1 m
1. Boom Lenght	: 6 m
2. Boom Lenght	: 5,5 m
3. Boom Lenght	: 5,6 m
4. Boom Lenght	: 4,6 m
Boom Swing Speed	: 104 sec
Boom Swinging Angle	: 365°
Concrete Pump Diameter (Inner)	: DN 100

## ● SUPPORT LEG SYSTEM

Front Legs	: Side Hydraulic Swing
Rear Legs	: Fixed
Distance of Front Legs (max)	: 4,3 m
Distance of Rear Legs (max)	: 2,6 m

## ● BOOM WORKING DIAGRAM



**www.saghargostar-co.ir**  
**@mr.pump\_iran**  
**+98 0912 8 584 584**  
**+98 021 - 224 286 75/8**